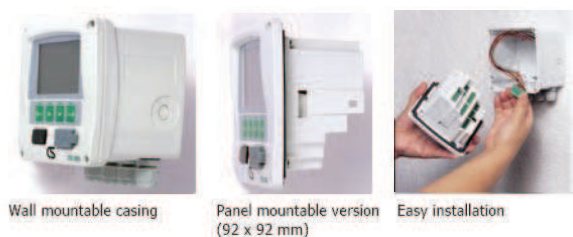


## DS 300 multi-channel display and data logger



**DS 300** is a multifunction measurement instrument for industrial applications. The base unit consists of LCD graphics display, 2 relay outputs, USB interface in a panel/wall mountable casing. Through various options **DS 300** can be configured to specific customer requirements. These options include: data recording, RS-485-interface, sensor inputs for CS flow and dew point sensors, sensor inputs for process signals (0-1V, 0-10V, 0-20 mA, 4-20mA) and temperature sensors (thermocouples, Pt100, Pt1000).



**DS 300** includes an optional data logger. Via the USB interface, recorded data can be downloaded to PC. Alternatively by using the **CS data stick**, recorded data from up to 64 DS 300 can be stored on the stick and then transferred to PC.

### Features DS 300

- ◆ Wall or panel mountable
- ◆ Universal power supply 100 ~ 240 VAC
- ◆ Big graphic display
- ◆ 2 relay (240 VAC, 3A)
- ◆ 4 ~ 20 mA output
- ◆ Up to 4 sensor inputs
- ◆ Programmable alarm
- ◆ Options:
- ◆ Data logger
- ◆ RS-485 interface
- ◆ Additional analogue inputs

### Technical data DS 300

Casing Size	118 x 115 x 93 mm
Panel size	92 x 92
Protection class	IP65
Power supply	100 ~ 240 VAC, 50-60 Hz 10 VA
Interface	USB to PC
Alarm output	2 relays, 230 VAC, 3 A
Ambient conditions	0 ~ 50 °C
Sensor inputs (up to 4 channels)	A: 2 channel SDI: FA 300, FA 4xx VA 300, VA 4x0 B: 2 channel analogue: 0-1V, 0-10V 0-20 mA, 4-20 mA Thermocouples Pt100/Pt1000
Accuracy 1)	Dew point: See sensor specs. Flow: See sensor specs 0-20 mA: 0.01 mA 0-10 V: 0.01 V Pt100: 0.2 °C Pt1000: 0.2 °C Thermocouple: 0.5 °C
Analogue outputs	4-20 mA and pulse signals from sensors accessible at rear connectors
Data logger	Up to 500,000 values
RS-485	Up to 32 DS 300 can be connected together and linked to a computer

1) Accuracy of sensor not included

## DS 300 multi channel display and data recorder

### DS 300

Via the optional RS-485 interface up to 32 DS 300 can be connected on a bus and through a RS-485/USB converter to the USB port of a PC. By using CS-Bus software all relevant measurement values are on line on the screen.

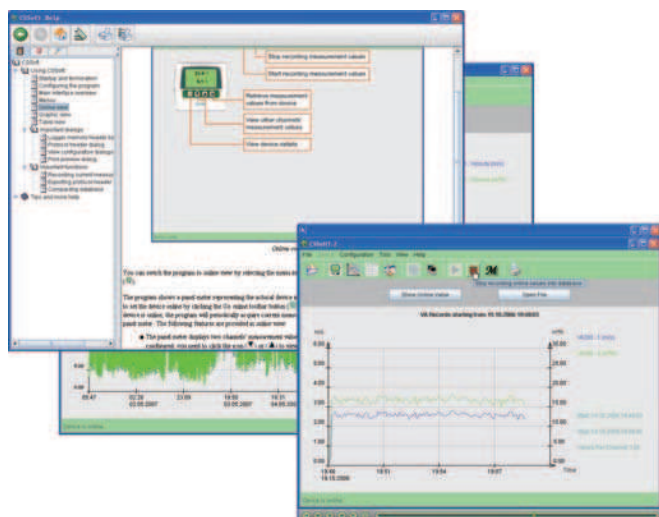
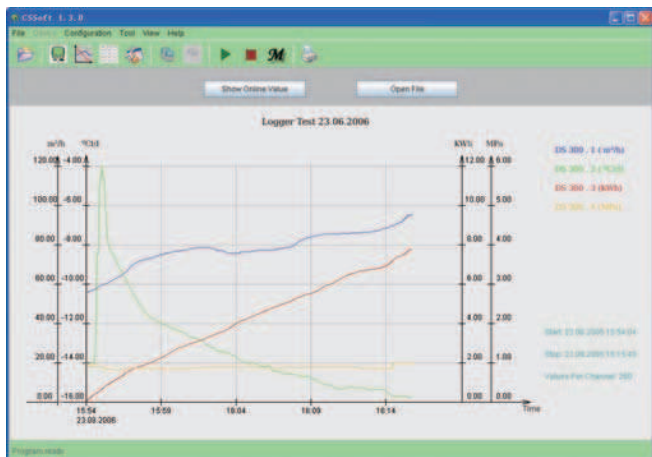
For an easy configuration DS 300 comes with a Configuration software. This enables the user to configure the instrument via USB port of the PC. No sensor or power connection is required. A hassle free setup is guaranteed.



Order No.		Option slot 1	Options slot 2	Language	Description
	-				
0500 3000	-				Base unit, 100...240 VAC, 50-60Hz, wall casing
0500 3100	-				Base unit, 100...240 VAC, 50-60Hz, wall casing, logger function
		A			None
A1030		B			2 input channels for CS sensors (FA 400, VA 400)
A1031		C			2 input channels for CS sensors (FA 400, VA 400) + RS-485
A1032		D			RS-485 (no S DI input)
			A		None
A1033			B		Analogue input, 2 channels (0-20 mA, 0-10V, thermocouples, Pt100, Pt1000)
				A	English
A1050				B	German
A1051				C	Chinese
A1052				D	Japanese
0554 7010					CS data stick

Please refer to sensor datasheets and software datasheet for further components and options

Nowadays measuring is not enough. The measured data needs to be analyzed and understandable reports have to be created. With **CS-Soft** and **CS-Bus** this becomes an easy task.



Order no.	Description
0554 7010	CS-Soft for DS 300 + DS 300 Configuration software, including USB cable
0554 7015	CS-Bus Basic for DS 300 + DS 300 Configuration software, including USB/RS-485 converter, USB cable
2390 1909	CS-Soft for CS 2390, RS 232 cable for CS 2390
0554 2005	CS-Soft for FA/VA 4xx + Service software, interface adapter, cable set

## Features CS-Soft

- ◆ On-line data acquisition
- ◆ Memory download from instrument
- ◆ Graphical analyzes
- ◆ Supports all CS devices (DS 300, CS 2390, interface adapter)
- ◆ Table view
- ◆ Report generation
- ◆ Data export to Excel
- ◆ PDF-file generation
- ◆ Languages: English, German, Chinese, Japanese
- ◆ Tutorial and Help
- ◆ For Windows XP and Vista

## Features CS-Bus

- ◆ Includes all features of CS-Soft
- ◆ Supports CS-Bus (RS-485) devices of up to 16 instruments
- ◆ Automatic bus setup procedure
- ◆ Fast database access

